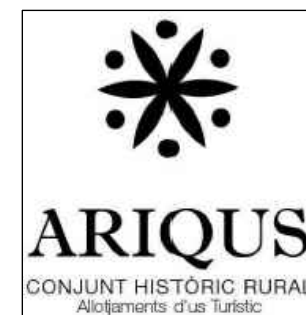
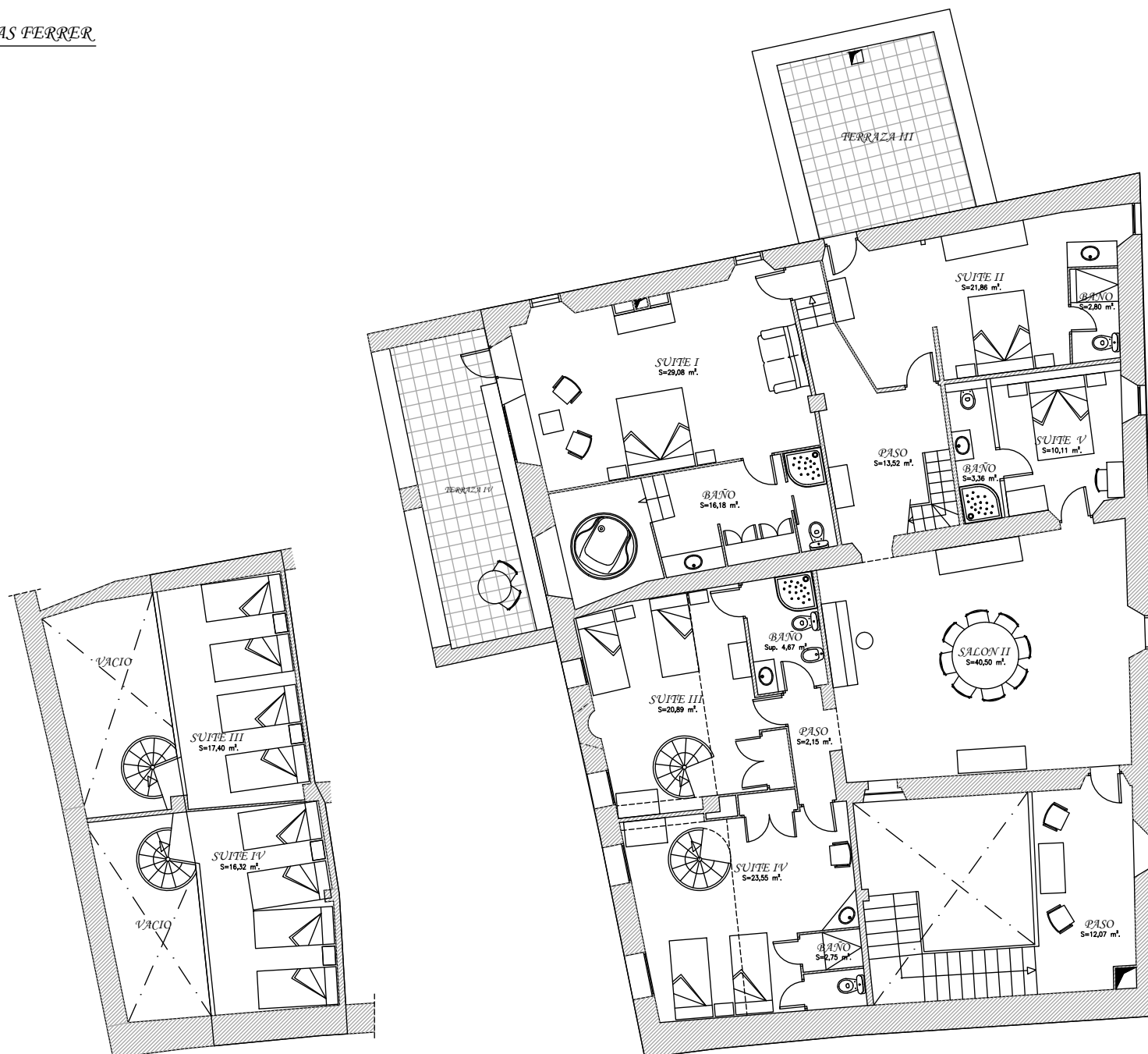


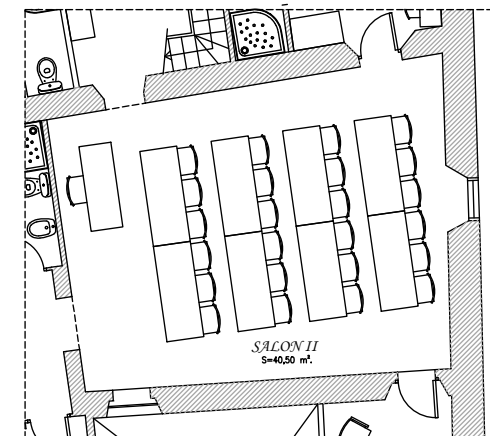
	Capacidad	Supletorios	
SUITE I	3 pers.	+ 1 pers.	
SUITE II	2 pers.	+ 1 pers.	
SUITE III	6 pers.	+ 1 pers.	
SUITE IV	6 pers.	+ 1 pers.	
SUITE V	2 pers.	+ 0 pers.	
DORMITORIO I	2 pers.	+ 0 pers.	
TOTAL	21 pers.	+ 4 pers.	= 25 pers.

PLANTA BAJA





	Capacitat	Supletorios
SUITE I	3 pers.	+ 1 pers.
SUITE II	2 pers.	+ 1 pers.
SUITE III	6 pers.	+ 1 pers.
SUITE IV	6 pers.	+ 1 pers.
SUITE V	2 pers.	+ 0 pers.
TOTAL	19 pers.	+ 4 pers. = 23 pers.



OPCIÓN SALA POLIVALENTE